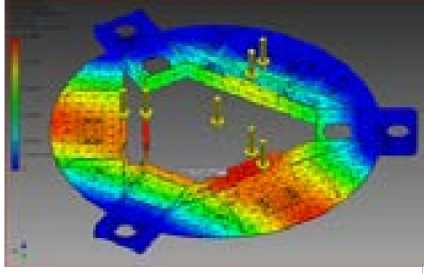




ARLOESIADAU

glyndŵr
INNOVATIONS

OpTIC
Technology
Centre



About Us

Contacts

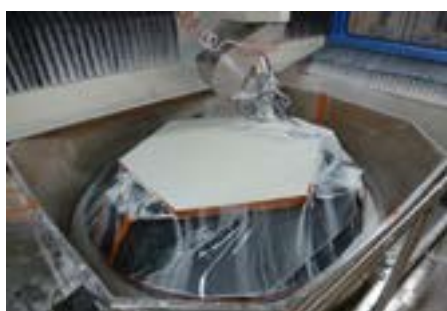
Opto-Mechanical Design

Precision Optical Polishing

Surface Metrology

Case Studies

Glyndŵr Innovations Ltd is a technology company, located in the OpTIC Centre, a large scale purpose built R&D facility in St Asaph, North Wales and is a wholly owned subsidiary of Wrexham Glyndŵr University. Glyndŵr Innovations provides a range of technical services to Industry and technical institutions, including engineering support, mechanical engineering design, surface metrology, and complex and large optical fabrication and polishing. Glyndŵr Innovations Ltd projects include optical and mechanical design and metrology optical mirror projects for ESO and Liverpool John Moores University.



- Glyndŵr Innovations Ltd has specialist skills in the fabrication of large and complex free form optics and supporting mechanical systems for telescope mirrors and other optical projects that require precision optics. These are complemented with advanced optical surface metrology capabilities including an extensive suite of test instruments, and class 8 environmental laboratory, reconfigurable optical test tower for large and complex optics and optical test design and modelling.
- The Engineering Team provide design, integration and commissioning services to a wide range of industry sectors including aerospace, defence and automotive.

Glyndŵr Innovations
The OpTIC Centre
St Asaph Business Park
Ffordd William Morgan
St Asaph • LL17 0JD • UK

Tel: +44 (0) 1745 535100
www.glyndwrinnovations.co.uk

ARLOESIADAU
glyndŵr
INNOVATIONS

OpTIC
Technology
Centre

Precision Optical Systems and Components

- The OpTIC Technology Centre offers a number of business services to local industry.
- Incubation units for start-up companies
- Conference facilities for up to 200 people
- Exhibition space
- Business and funding support

The OpTIC Technology Centre is part of the UK Space Agency incubator network. Working in partnership with the UK Space Agency as a Specialist Incubation Centre for startups in the space sector in the UK.



Caroline Gray
Director - OpTIC Centre c.gray@glyndwr.ac.uk

Prof. Paul Rees
Metrology
p.rees@glyndwr.ac.uk

Dr. Seraj Hamidi
Commercial Manager
s.hamidi@glyndwr.ac.uk
Martin Coleman Team
Leader - Mechanical
m.coleman@glyndwr.ac.uk

Richard Hazelwood
Sales Engineer
r.hazelwood@glyndwr.ac.uk

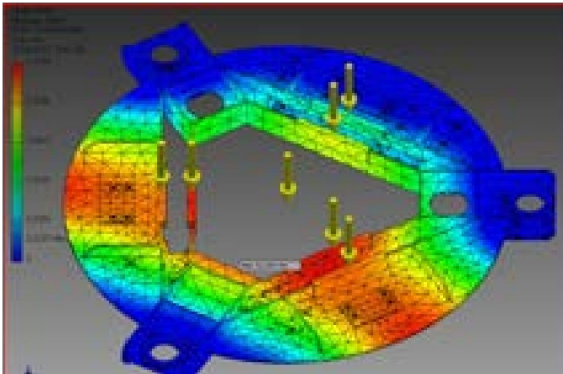
Glyndŵr Innovations
The OpTIC Centre
St Asaph Business Park
Ffordd William Morgan
St Asaph • LL17 0JD • UK

Tel: +44 (0) 1745 535100
www.glyndwrinnovations.co.uk

ARLOESIADAU
glyndŵr
INNOVATIONS

OpTIC
Technology
Centre

Precision Optical Systems and Components



Both large and small optics require mounting mechanisms, the opto mechanical design team has a proven track record of producing designs for the mounting of optics from small consumer systems to large mirrors.

Mounting systems are designed to support the optic without introducing distortion or error. These mounts can be static or have precision actuation in many axes of movement.



Using this knowledge we have:

- Custom designed optical test equipment including interferometric instrumentation
- Design and production of optical and support systems for a wide variety of industries and applications
- Design of light-weighted optics for airborne and space applications



Glyndŵr Innovations
The OpTIC Centre
St Asaph Business Park
Ffordd William Morgan
St Asaph • LL17 0JD • UK

Tel: +44 (0) 1745 535100
www.glyndwrinnovations.co.uk

ARLOESIADAU
glyndŵr
INNOVATIONS

OpTIC
Technology
Centre

Precision Optical Systems and Components

Precision Optical Polishing



Glyndŵr Innovations designs and produces nano precision, complex optical components and assemblies. We are highly experienced in the production of precision optical components. The team are able to process a variety of materials, up to 1.6m diameter.

Capability exists to produce a range of surfaces including convex, concave, flat, spherical, aspheric or freeform.

Using a new process that overcomes some of the disadvantages of traditional polishing methods, the newly developed technology involves CNC polishing techniques and insitu measurement.

This enables us to produce symmetrical, aspheric or freeform optics required in high specification projects. The result is a high level of process flexibility, shorter production times and improved quality.


Glyndŵr Innovations
The OpTIC Centre
St Asaph Business Park
Ffordd William Morgan
St Asaph • LL17 0JD • UK

Tel: +44 (0) 1745 535100
www.glyndwrinnovations.co.uk

ARLOESIADAU
glyndŵr
INNOVATIONS

OpTIC
Technology
Centre

Precision Optical Systems and Components



Supported by fully equipped metrology capabilities including reconfigurable 10m and 3m optical test towers and dedicated optical test benches.

Glyndŵr Innovations
The OpTIC Centre
St Asaph Business Park
Ffordd William Morgan
St Asaph • LL17 0JD • UK

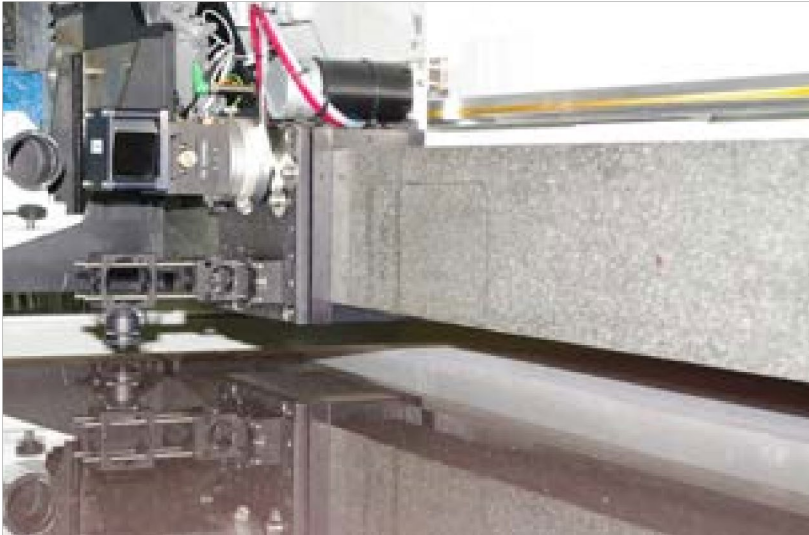
Tel: +44 (0) 1745 535100
www.glyndwrinnovations.co.uk

ARLOESIADAU
glyndŵr
INNOVATIONS

OpTIC
Technology
Centre

Precision Optical Systems and Components

Surface Metrology



Metrology is an intrinsic part of any production process: in order to meet the requirements of the customer, parts and assemblies must be measured throughout processing.

Glyndŵr Innovations has specialist skills and equipment for the metrology of precision components, including optical components.

The facility boasts a range of contact-based surface metrology equipment, including a FARO Ion laser tracker (accuracy better than $40\mu\text{m}$), a Pioneer CMM (measurement accuracy $5\mu\text{m}$) and a Taylor Hobson Extended Form Talysurf profilometer (accuracy $<1\mu\text{m}$).

In addition, Glyndŵr Innovations has specialist metrology equipment designed for the precision measurement of optics. This includes several high-end optical interferometers (three 4D Phasecam interferometers and one Fisba), a Nikon white light interferometer for the measurement of surface texture (accuracy 0.5nm) and an NT-MDT atomic force microscope (accuracy 0.5nm) and a NOM (Nano-metric Optical Measuring Machine) a non contact 2D profilometer with an accuracy of 350nm .

The nature of working to ultra-precision tolerances means that each surface must be assessed as part of the measurement process.

Glyndŵr Innovations has the specialist metrology skills to design both contact and optical testing methods.

This includes opto-mechanical support tooling created to match large optics being made, ensuring that the metrology matches the final optical support mechanism. Our design engineers have experience in creating tooling that will ensure both the production and the testing of precision components meet specification.

Glyndŵr Innovations
The OptIC Centre
St Asaph Business Park
Ffordd William Morgan
St Asaph • LL17 0JD • UK

Tel: +44 (0) 1745 535100
www.glyndwrinnovations.co.uk

ARLOESIADAU
glyndŵr
INNOVATIONS

OptIC
Technology
Centre

Precision Optical Systems and Components

In addition, we can develop bespoke tests for third-party metrology applications.

Glyndŵr Innovations
The OpTIC Centre
St Asaph Business Park
Ffordd William Morgan
St Asaph • LL17 0JD • UK

Tel: +44 (0) 1745 535100
www.glyndwrinnovations.co.uk

ARLOESIADAU
glyndŵr
INNOVATIONS

OpTIC
Technology
Centre

Precision Optical Systems and Components

The team at Glyndŵr Innovations has undertaken many projects , some of these are highlighted below.



Prototype Segments for ESO E-ELT

Production of 4 prototype segments for the E-ELT telescope. These units were to develop processes and techniques for the production of the extra large optics ESO will require. Each optic is 1.4m across and was polished to a surface accuracy of 9nm rms.

The team has gone on to polish the reference optics that will be used in the final manufacturing process.

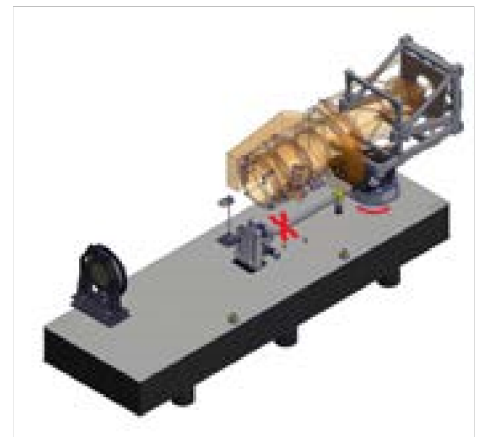
Satellite Optics Test System

To design and build a modular transfer function test system for the Imaging system on an earth imaging satellite.

The Imaging system for the satellite comprises an arrangement of lenses, mirror, camera and optical imaging components. The complete assembly weighs over 400Kg.

The test system would be used to perform a verification test on the assembled imaging system to verify the alignment of all the optics and prove the system was working to specification before being assembled into the main satellite.

Whilst complete motion of the unit was only in the order of 4 degrees, each movement had to have sub-minute of arc accuracy with no hysteresis. This was achieved with the use of flexures and a servo based actuators.

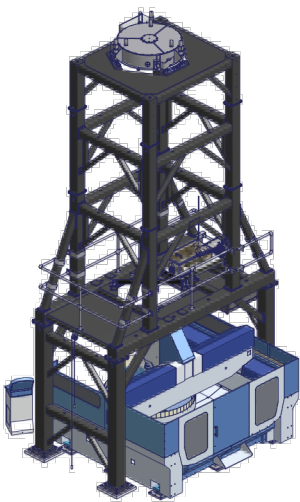


Interferometric Test Tower

In order to produce the 1.4m segments for ESO , the company had to develop a number of the systems and instruments that would be required. These included a 10m high test tower that is situated directly over the polishing system, so that large optics could be tested without being moved.

The tower can be configured for use on optics with varying radii of curvature. There is an interferometer mounted on the platform halfway up the tower and a series of mirrors, including a 1m mirror mounted face down at the top of the tower give an optical path reproducing

The whole structure was designed to a high level of accuracy and had to be rigid enough to not allow any movement that might affect the interferometric tests of the surface form of the optic. The tower was also designed to compensate for vibrations in the building.



Other optics that have been produced by Glyndŵr Innovations include:

Glyndŵr Innovations
The OpTIC Centre
St Asaph Business Park
Ffordd William Morgan
St Asaph • LL17 0JD • UK

Tel: +44 (0) 1745 535100
www.glyndwrinnovations.co.uk

ARLOESIADAU
glyndŵr
INNOVATIONS

OpTIC
Technology
Centre

Precision Optical Systems and Components